

# CERTIFICATE OF ANALYSIS

## ISO/IEC 17025:2017 ACCREDITED FACILITY

Order #: 42774  
 Order Name: Omega Leaf  
 1500mg Full Spectrum CBD  
 Mint Chocolate Tincture  
 Batch#: OL-J316-1C13-4411-  
 01820-OF1500MC  
 Received: 01/28/2025  
 Completed: 02/04/2025

Omega Leaf CBD  
**Batch Production Date:**  
 January 15th, 2025



### Sample



<b>0.005%</b> D9-THC	<b>5.129%</b> Total CBD
-------------------------	----------------------------

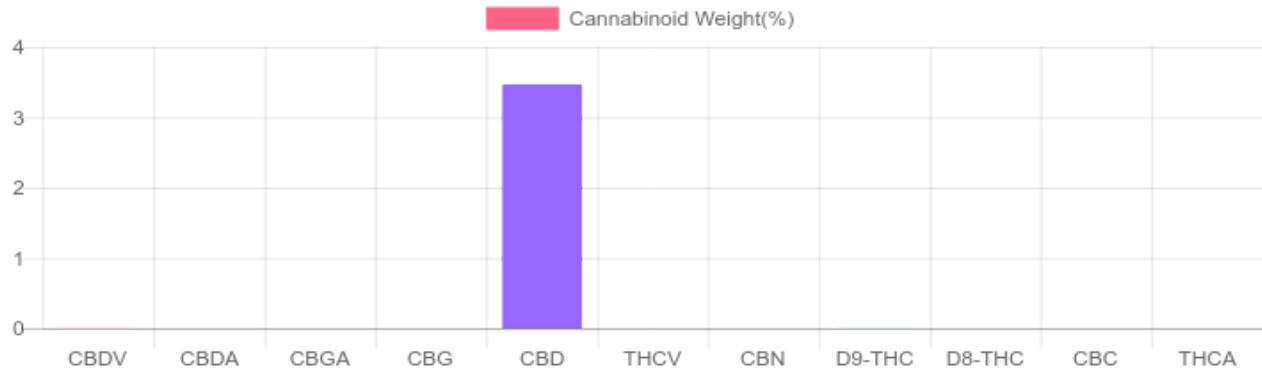
<b>1,562 mg</b> Cannabinoids per unit	<b>1,522 mg</b> CBD per unit
------------------------------------------	---------------------------------

1 unit = 30 ml per unit x density (1) x  
 Cannabinoid concentration

### Cannabinoids Test

SHIMADZU INTEGRATED UPLC-PDA  
 GSL SOP 400      **PREPARED:** 02/05/2025 12:17:16      **UPLOADED:** 02/04/2025 08:53:35

Cannabinoids	LOQ	weight(%)	mg/g	mg/unit
D9-THC	10 PPM	0.005%	0.044	1.302
THCA	10 PPM	N/D	N/D	N/D
CBD	10 PPM	5.129%	50.643	1,558
CBDA	20 PPM	N/D	N/D	N/D
CBDV	20 PPM	0.006%	0.063	1.918
CBC	10 PPM	N/D	N/D	N/D
CBN	10 PPM	N/D	N/D	N/D
CBG	10 PPM	N/D	N/D	N/D
CBGA	20 PPM	N/D	N/D	N/D
D8-THC	10 PPM	N/D	N/D	N/D
THCV	10 PPM	N/D	N/D	N/D
TOTAL D9-THC		0.005%	0.005%	1.284
TOTAL CBD*		5.117%	50.970	1,522
TOTAL CANNABINOIDS		5.187%	50.566	1,562



Reporting Limit 10 ppm  
 \*Total CBD = CBD + CBDA x 0.877  
 N/D - Not Detected, B/LOQ - Below Limit of Quantification



# CERTIFICATE OF ANALYSIS

## ISO/IEC 17025:2017 ACCREDITED FACILITY

Order #: 42774  
 Order Name: Omega Leaf  
 1500mg Full Spectrum CBD  
 Mint Chocolate Tincture  
 Batch#: OL-J316-1C13-4411-  
 01820-OF1500MC  
 Received: 01/28/2025  
 Completed: 02/04/2025

Omega Leaf CBD

**Batch Production Date:**  
 January 15th, 2025



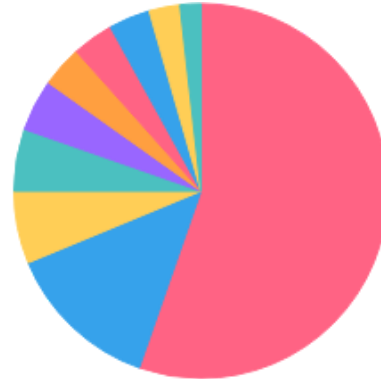
GSL SOP 404  
 Prepared: 02/05/2025 22:28:02  
 Uploaded: 02/04/2025 22:00:23

### TERPENES: TOTAL (0.112%)

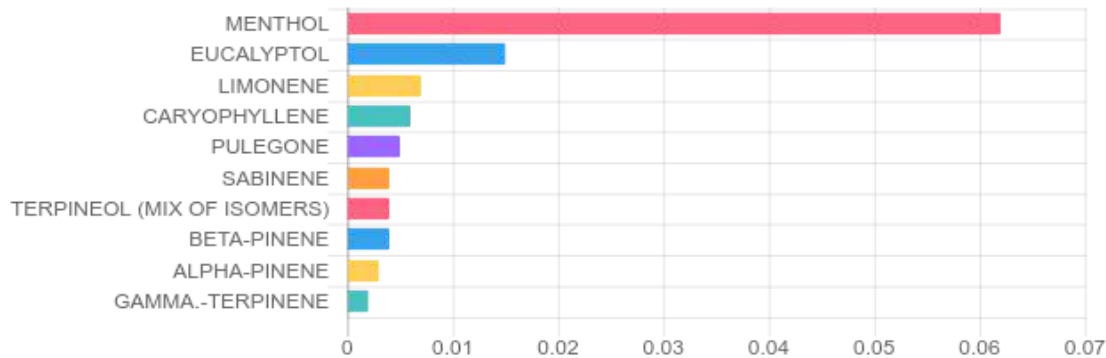
Headspace GCMS - Shimadzu GCMS QP2020 with HS20

Terpene	Results (%)	LOQ (%)	LOD (%)
ALPHA-PINENE	B/LOQ	0.0067%	0.0063%
BETA-PINENE	B/LOQ	0.0067%	0.0063%
CARYOPHYLLENE	B/LOQ	0.0067%	0.0063%
EUCALYPTOL	0.023	0.0067%	0.0063%
GAMMA.-TERPINENE	B/LOQ	0.0067%	0.0016%
LIMONENE	0.011	0.0067%	0.0063%
MENTHOL	0.093	0.0067%	0.0063%
PULEGONE	B/LOQ	0.0067%	0.0063%
SABINENE	B/LOQ	0.0067%	0.0063%
TERPINEOL (MIX OF ISOMERS)	B/LOQ	0.0067%	0.0063%

### Terpenes Breakdown



### Top Terpenes Results:



### Tested for but not present:

ALPHA-PINENE, CAMPHENE, BETA-MYRCENE, BETA-PINENE, 3-CARENE, ALPHA-TERPINENE, TRANS-BETA-OCIMENE, LIMONENE, P-CYMENE, CIS-BETA-OCIMENE, EUCALYPTOL, GAMMA-TERPINENE, TERPINOLENE, LINALOOL, ISOPULEGOL, GERANIOL, CARYOPHYLLENE, HUMULENE, CIS-NEROLIDOL, TRANS-NEROLIDOL, GUAIOL, CARYOPHYLLENE OXIDE, ALPHA-BISABOLOL ACETATE, GUAIOL, HUMULENE, ISOBORNEOL, ISOPULEGOL, LINALOOL, NEROL, SABINENE HYDRATE, TERPINOLENE, TRANS-BETA-OCIMENE, TRANS-NEROLIDOL, VALENCENE



# CERTIFICATE OF ANALYSIS

## ISO/IEC 17025:2017 ACCREDITED FACILITY

Order #: 42774  
 Order Name: Omega Leaf  
 1500mg Full Spectrum CBD  
 Mint Chocolate Tincture  
 Batch#: OL-J316-1C13-4411-  
 01820-OF1500MC  
 Received: 01/28/2025  
 Completed: 02/04/2025

Omega Leaf CBD

**Batch Production Date:**  
 January 15th, 2025



### PESTICIDE ANALYSIS:

GSL SOP 401

PREPARED: 02/05/2025 17:03:13

UPLOADED: 02/04/2025 11:46:03

GCMS-MS - Shimadzu GCMS-TQ8040

Pesticide	Action Level (ppm)	Results (ppm)	LOQ (ppm)	LOD (ppm)
CAPTAN	0.700	N/D	0.003	0.001
CHLORDANE	0.100	N/D	0.003	0.001
CHLORFENAPYR	0.100	N/D	0.003	0.001
COUMAPHOS	0.100	N/D	0.003	0.001
CYFLUTHRIN	2.000	N/D	0.003	0.001

Pesticide	Action Level (ppm)	Results (ppm)	LOQ (ppm)	LOD (ppm)
CYPERMETHRIN	1.000	N/D	0.003	0.001
FIPRONIL	0.100	N/D	0.003	0.001
FLUDIOXONIL	0.100	N/D	0.003	0.001
PARATHION-METHYL	0.100	N/D	0.003	0.001
PENTACHLORONITROBENZENE	0.100	N/D	0.003	0.001

LCMS-MS - Shimadzu LCMS-8060

Pesticide	Action Level (ppm)	Results (ppm)	LOQ (ppm)	LOD (ppm)
ABAMECTIN B1A	0.100	N/D	0.005	0.001
ACEPHATE	0.100	N/D	0.001	0.001
ACEQUINOCYL	0.100	N/D	0.001	0.001
ACETAMIPRID	0.100	N/D	0.005	0.001
ALDICARB	0.100	N/D	0.005	0.001
AZOXYSTROBIN	0.100	N/D	0.001	0.001
BIFENAZATE	0.100	N/D	0.005	0.001
BIFENTHRIN	3.000	N/D	0.005	0.001
BOSCALID	0.100	N/D	0.005	0.001
CARBARYL	0.500	N/D	0.003	0.001
CARBOFURAN	0.100	N/D	0.001	0.001
CHLORANTRANILIPROLE	10.000	N/D	0.005	0.005
CHLORPYRIFOS	0.100	N/D	0.001	0.001
CLOFENTEZINE	0.100	N/D	0.001	0.001
DAMINOZIDE	0.100	N/D	0.005	0.001
DIAZANON	0.100	N/D	0.001	0.001
DICHLORVOS	0.100	N/D	0.005	0.001
DIMETHOATE	0.100	N/D	0.001	0.001
DIMETHOMORPH	2.000	N/D	0.005	0.001
ETHOPROPHOS	0.100	N/D	0.001	0.001
ETOFENPROX	0.100	N/D	0.001	0.001
ETOXAZOLE	0.100	N/D	0.010	0.005
FENHEXAMID	0.100	N/D	0.005	0.001
FENOXYCARB	0.100	N/D	0.005	0.001
FENPYROXIMATE	0.100	N/D	0.001	0.001
FLONICAMID	0.100	N/D	0.025	0.010
HEXYTHIAZOX	0.100	N/D	0.005	0.001
IMAZALIL	0.100	N/D	0.005	0.001

Pesticide	Action Level (ppm)	Results (ppm)	LOQ (ppm)	LOD (ppm)
IMIDACLOPRID	5.000	N/D	0.005	0.001
KRESOXIM-METHYL	0.100	N/D	0.010	0.005
MALATHION	0.500	N/D	0.005	0.001
METALAXYL	2.000	N/D	0.001	0.001
METHIOCARB	0.100	N/D	0.005	0.001
METHOMYL	1.000	N/D	0.001	0.001
MEVINPHOS	0.100	N/D	0.001	0.001
MYCLOBUTANIL	0.100	N/D	0.005	0.001
NALED	0.100	N/D	0.005	0.001
OXAMYL	0.500	N/D	0.001	0.001
PACLOBUTRAZOL	0.100	N/D	0.005	0.001
PERMETHRINS	0.500	N/D	0.005	0.001
PHOSMET	0.100	N/D	0.005	0.001
PIPERONYL BUTOXIDE	3.000	N/D	0.001	0.001
PRALLETHRIN	0.100	N/D	0.005	0.005
PROPICONAZOLE	0.100	N/D	0.010	0.005
PROPOXUR	0.100	N/D	0.001	0.001
PYRETHRINS (PYRETHRIN I)	0.500	N/D	0.005	0.005
PYRIDABEN	0.100	N/D	0.005	0.001
SPINETORAM	0.100	N/D	0.001	0.001
SPINOSAD	0.100	N/D	0.001	0.001
SPIROMESIFEN	0.100	N/D	0.005	0.001
SPIROTETRAMAT	0.100	N/D	0.001	0.001
SPIROXAMINE	0.100	N/D	0.001	0.001
TEBUCONAZOLE	0.100	N/D	0.005	0.001
THIACLOPRID	0.100	N/D	0.001	0.001
THIAMETHOXAM	5.000	N/D	0.001	0.001
TRIFLOXYSTROBIN	0.100	N/D	0.001	0.001

N/D = Not Detected, A/LOQ = Above LOQ Level, B/LOQ = Below LOQ Level, B/LOD = Below LOD Level



These reports are provided for a general proof of product quality and do not serve as perfectly accurate results

# CERTIFICATE OF ANALYSIS

## ISO/IEC 17025:2017 ACCREDITED FACILITY

Order #: 42774  
Order Name: Omega Leaf  
1500mg Full Spectrum CBD  
Mint Chocolate Tincture  
Batch#: OL-J316-1C13-4411-  
01820-OF1500MC  
Received: 01/28/2025  
Completed: 02/04/2025

Omega Leaf CBD

Batch Production Date:  
January 15th, 2025



### RESIDUAL SOLVENTS:

Headspace GCMS - Shimadzu GCMS QP2020 with HS20

GSL SOP 405  
Prepared: 02/05/2025 16:31:07  
Uploaded: 02/04/2025 08:00:39

Residual Solvent	Action Level (ppm)	Results (ppm)	LOQ (ppm)	LOD (ppm)
ACETONE	5,000	N/D	140	20
ACETONITRILE	410	N/D	25	1
BENZENE	1	N/D	1	0.5
BUTANE	5,000	N/D	50	10
CHLOROFORM	1	N/D	1	0.5
DICHLOROETHANE	1	N/D	1	0.5
DICHLOROMETHANE	1	N/D	1	0.5
ETHANOL	5,000	N/D	140	20
ETHYL ACETATE	5,000	N/D	140	20
ETHYL ETHER	5,000	N/D	140	20
ISOPROPYL ALCOHOL	5,000	N/D	140	20
METHANOL	3,000	N/D	100	20
N-HEPTANE	5,000	N/D	140	20
N-HEXANE	290	N/D	18	10
PENTANE	5,000	N/D	140	20
PROPANE	5,000	N/D	20	1
TOLUENE	890	N/D	53	1
TRICHLOROETHENE	1	N/D	0	0
XYLENES	2,170	N/D	130	20



# CERTIFICATE OF ANALYSIS

## ISO/IEC 17025:2017 ACCREDITED FACILITY

**Order #:** 42774  
**Order Name:** Omega Leaf  
 1500mg Full Spectrum CBD  
 Mint Chocolate Tincture  
**Batch#:** OL-J316-1C13-4411-  
 01820-OF1500MC  
**Received:** 01/28/2025  
**Completed:** 02/04/2025

Omega Leaf CBD

**Batch Production Date:**  
 January 15th, 2025



### Microbial Analysis:

Microbial Analysis GSL SOP 406

Uploaded: 02/04/2025 13:44:16

PCR - Agilent AriaMX

Test	Test Method Used	Device Used	LOD	Allowable Criteria	Actual Result	Pass/Fail
STEC E.COLI*	USP 61/62	ARIAMX PCR	2 COPIES OF DNA	PRESENCE / ABSENT	BELOW LOD	PASS
SALMONELLA*	USP 61/62	ARIAMX PCR	5 COPIES OF DNA	PRESENCE / ABSENT	BELOW LOD	PASS
ASPERGILLUS	USP 61/62	ARIAMX PCR	ASP_LOD***	PRESENCE / ABSENT	BELOW LOD	PASS
YEAST AND MOLD	USP 61/62	ARIAMX PCR	363.05518 CFU/G**	1,000	BELOW THRESHOLD	PASS
TOTAL AEROBIC BACTERIA	USP 61/62	ARIAMX PCR	0.25316 CFU/G**	10,000	BELOW THRESHOLD	PASS
COLIFORM	USP 61/62	ARIAMX PCR	3.41539 CFU/G**	100	BELOW THRESHOLD	PASS
ENTEROBACTERIACEAE	USP 61/62	ARIAMX PCR	0.32951 CFU/G**	100	BELOW THRESHOLD	PASS

USP 61 (enumeration of bacteria TAC, TYM, and ENT/Coliform), USP 62 (identifying specific species E.coli Aspergillus etc)

\* STEC and Salmonella run as Multiplex

\*\* CFU/g Calculation based on Select Category Type Gummy MIP/Extract Flower matrix

\*\*\* Flavius = 2 Copies of DNA / Fumigatis = 2 Copies of DNA Niger = 20 Copies of DNA / Terrus = 10 copies of DNA



# CERTIFICATE OF ANALYSIS

## ISO/IEC 17025:2017 ACCREDITED FACILITY

Order #: 42774  
Order Name: Omega Leaf  
1500mg Full Spectrum CBD  
Mint Chocolate Tincture  
Batch#: OL-J316-1C13-4411-  
01820-OF1500MC  
Received: 01/28/2025  
Completed: 02/04/2025

Omega Leaf CBD

Batch Production Date:  
January 15th, 2025



### Mycotoxin Analysis:

LC-MS - Shimadzu LCMS-8060  
GSL SOP 401

Uploaded: 02/04/2025 11:46:03

Analyte	Action Lvl (ppb)	Results (ppb)
AFLATOXIN B1	20	N/D
AFLATOXIN B2	20	N/D
AFLATOXIN G1	20	N/D
AFLATOXIN G2	20	N/D
OCHRATOXIN A	20	N/D

LOQ is 4ppb, LOD is 1ppb

### Heavy Metals Analysis:

ICP-MS - Shimadzu ICPMS-2030  
GSL SOP 403

Uploaded: 02/04/2025 16:22:53

Metal	Action Level (ppb)	Result (ppb)
ARSENIC (AS)	200	B/LOQ
CADMIUM (CD)	200	B/LOQ
MERCURY (HG)	100	B/LOQ
LEAD (PB)	500	B/LOQ

Lower Limit of Quantitation (LOQ) is 75 ppb

### Water Activity:

HD-3A Water Activity Meter - GSL SOP 407

Uploaded: 02/04/2025 14:08:03

#### Water

0.55

### Filth and Foreign Materials Analysis:

Microscope - Amscope Simul-Focal Trinocular Stereo Zoom Microscope - GSL SOP 409

Uploaded: 02/04/2025 14:09:08

Pass: No Foreign Materials Detected

